

## Ball transfer units

Heavy duty Steel-housing, without collar

### SPECIFICATION

Housing Steel **SBL**

- turned
- zinc plated, blue passivated
- Ball Steel, blank

### INFORMATION

Ball transfer units GN 509.4 are used on conveyor tracks. They assist a linear or rotary movement of heavy loads on conveyor track. They have no support collar, taking the load at the housing diameter  $d_2$  instead.

### ON REQUEST

- Plastic ball (Polyamide)
- Stainless Steel-Balls
- Stainless Steel-Housings

### TECHNICAL INFORMATION

All ball operated conveyers are made up of a number of balls each located in a socket resting on a number of smaller support balls thus allowing the larger ball to rotate in any direction.

#### Arrangement and choice of ball size

When deciding on the size of the conveyor the following factors have to be taken into account: Weight, size, base material as well as the load to be carried.

The **max. distance between the roller balls „a2“** (on a plane surface) is arrived at by dividing the shortest edge length of the load to be conveyed by 2.5. This ensures that a load will always be supported by carrier balls thus preventing it from tipping over into an empty space.

The required **load carrying capacity** of the balls is determined by the weight of the actual load divided by three. This is arrived at from the assumption that, due to tolerances on the load carrying face and the spacing of the balls in general, only three balls will be under load at any one time.

$$a_1 = \text{shortest edge length of the load} \quad F_1 = \text{Load weight}$$

$$a_2 = \text{max. distance between roller balls} \quad F_2 = \text{Load per roller ball}$$

$$a_2 = a_1 / 2.5 \quad F_2 = F_1 / 3$$



#### Speed and friction

The permissible conveying speed is 2 m/sec. With larger roller balls at speeds exceeding 1 m/sec., depending on the weight being conveyed, an increased temperature would be expected.

The **friction values** of the balls at a speed of 1 m/sec. will be in the region of 0.005  $\mu$ . This value is, however, dependent on application of usage and could be subject to large variations.

In comparison of balls with sheet metal housings (GN 509, see page 1100) with balls in heavy duty steel housing (GN 509.1, see page 1102), the latter have a higher rigidity. Hence the static values of balls in steel housing can be applied.

**Lubrication** to prevent corrosion is recommended. The general recommendations applicable to ordinary roller bearings will be sufficient. In most applications lubrication can be ignored.

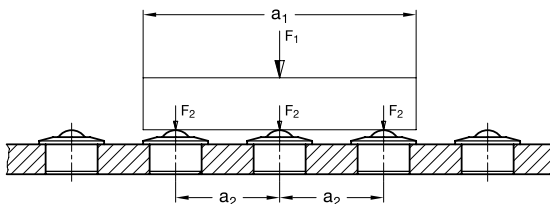
#### Resistance to temperature

Balls from size 36 upwards are fitted with a felt seal as protection against ingress of dirt and dust. The latter have a max temperature of 100 °C only.

Balls without the felt seal can also be used at higher operating temperatures. This, however, will lead to a reduced conveying capacity (c). The following table gives indicative values:

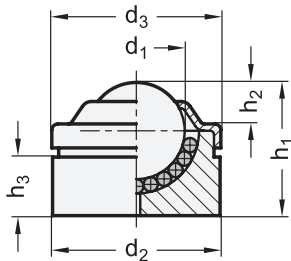
125 °C	/ . 10 %
150 °C	/ . 20 %
170 °C	/ . 30 %
200 °C	/ . 50 %

The max. operating temperature for ball transfer units with plastic ball is 60 °C.

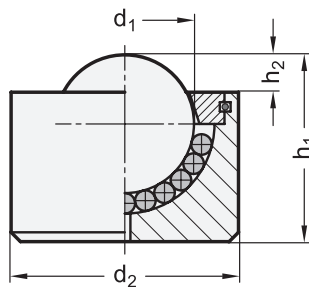




Version size 8, 12  
(Sheet steel cover)



Version size 15, 22, 30, 45



GN 509.4

Description	Size	d1	d2 ±0.08	d3	h1 ±0.3	h2 ±0.3	h3	Load C in N	Δ
GN 509.4-8-SBL	8	7.9	18	18	12	2	5.1	120	18
GN 509.4-12-SBL	12	12.7	22	22.2	17.5	5.5	7.7	200	34
GN 509.4-15-SBL	15	15.8	24	-	20	5	-	500	49
GN 509.4-22-SBL	22	22.2	36.5	-	30	6	-	1300	175
GN 509.4-30-SBL	30	30.1	44.6	-	36.8	7.5	-	2500	324
GN 509.4-45-SBL	45	44.4	62.6	-	53.5	13	-	6000	940